



1.0 Scope and Application:

1.1 Appropriate disposal of Regulated Medical Waste (RMW) is everyone's responsibility, from the laboratory worker who generates the waste to the hauler who transports that waste to its final destination. Proper management reduces the level of concerns with respect to public health and environmental hazards associated with improper disposal of RMW. This procedure provides guidance for the collection, transport and removal of RMW in Weill Hall

2.0 Purpose:

2.1 To provide a standard operating procedure for labs within Weill Hall to collect and dispose of regulated medical waste in a safe and secure manner.

3.0 Responsibilities:

3.1 **Facility Director** – the Facility Director or designee will ensure that this procedure is communicated to all building occupants and all affected parties.

3.2 **Principal Investigator** – the Principal Investigator, along with their Lab Safety Officer, is responsible to ensure that their lab personnel are following this SOP and other Cornell Policies related to the handling of regulated medical waste.

3.3 **Lab Safety Officer** – the Lab Safety Officer is responsible to ensure that their lab personnel are following this SOP and other Cornell Policies related to the handling of regulated medical waste.

4.0 Procedures:

4.1 Containers:

4.1.1 Sharps containers must be manufactured, rigid, leak proof and puncture-resistant (cardboard containers are no-longer allowed). Containers must also be in good condition with no holes or cracks and hold any liquid when standing upright.

4.1.2 Biohazard bags must be red in color and have the universal biohazard symbol on them. (EH&S recommends VWR cat. no. 11215-826 or 3mil. RMW bag)

4.2 Packing Procedures:

4.2.1 Sharps must be placed in manufactured containers. The container lid must be secured as to prevent release of material and injury to personnel. No needles can be sticking through the locking enclosure.

4.2.2 Dry RMW (excluding sharps) must be double bagged in red biohazard bags. Waste must be re-bagged after autoclaving with a fresh biohazard bag. Bags cannot be leaking or have holes and cannot contain loose pipettes.

4.2.2.1 Pipettes must be placed in cardboard boxes within biohazard bags, packaged in biohazard burn boxes or bundled together by tape.

4.2.2.2 Bags must be sealed tightly and not come open during handling. It is best to use twist ties, plastic cable ties or sturdy tape (time tape is not sturdy).

4.2.3 Biohazard burn boxes must be lined with a biohazard bag. The bag must be closed and the lid fastened with sturdy tape (duct tape or packing tape).

4.2.4 Liquid RMW can be disposed in sanitary drain after autoclaving or after being treated with a 10-fold bleach solution for at least 30 minutes.

4.2.5 Carcasses and animal tissues that are non-infectious must be bagged in non-biohazard bags. The bags cannot be leaking or contain holes. Bags cannot contain excess plastics, gloves or pads. Black or dark trash bags are required.

4.3 Waste Removal:

4.3.1 Segregate RMW in red biohazard bags (double bag) or sharps disposal containers. See **Appendix A Biological Waste Disposal Guide**.

4.3.2 Once a bag of RMW or sharps container is full, it is the responsibility of each lab to transport this waste to Room B97 in the Loading Dock Compactor Room per the following steps. This



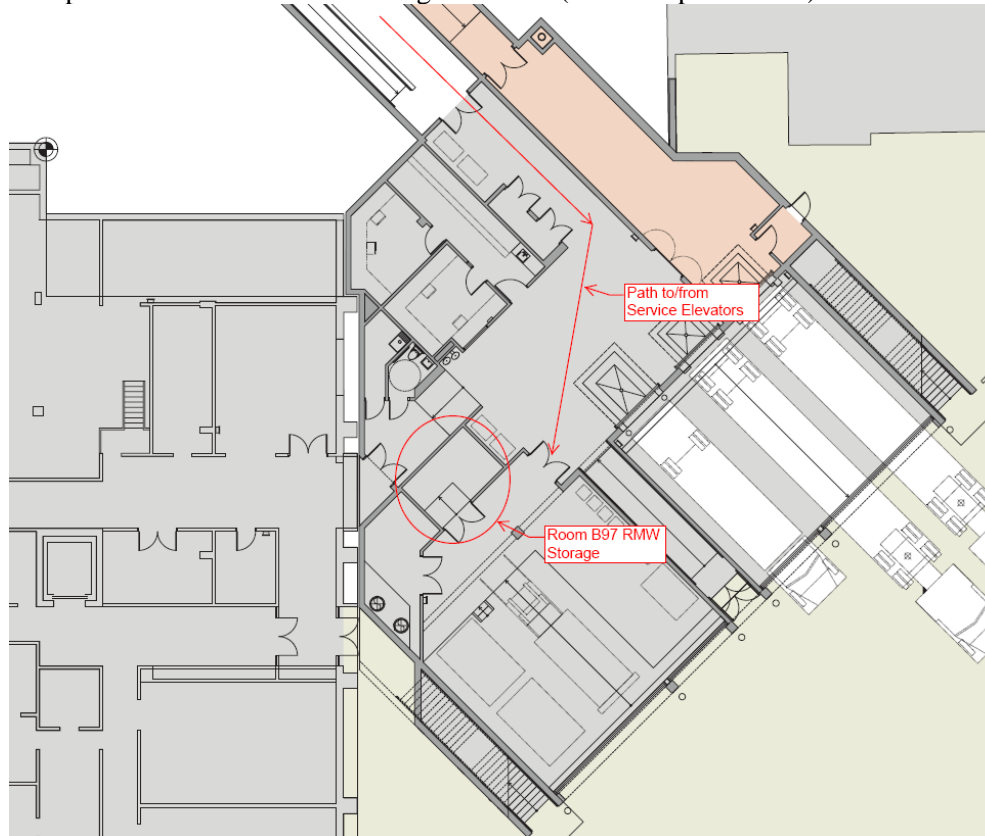
room contains several large bulk containers for RMW, and the bagged waste must be placed in one of these containers.

- 4.3.3 Seal bags with zip or twist ties, or tape and secure lid on sharps disposal container.
- 4.3.4 Don a pair of disposable gloves and place bags or containers in a tray or bin and use a laboratory cart to move the waste. Alternatively, you can use a covered secondary container.

CAUTION: Do not hand carry your waste.



- 4.3.5 Remove gloves and transport bags and containers to the RMW room B97 within the trash compactor room B82 at the loading dock area (see floor plan below).



CAUTION: Do not travel thru public access areas.



4.3.6 Attach a Medical Waste Tracking Tag to each bag and container. Tags can be obtained in the RMW room or by contacting EH&S (5-8200).

20001

Cornell College of Veterinary Medicine
 Medical Waste Tracking System
 Waste Tracking Tag

Your Name: _____ Phone: _____ Date: ___/___/___

Department: _____ Section/PI: _____

Waste Information: (CHECK ONE)

RMW – red bag

RMW – sharps container

bedding

intact carcass disposal
 (enter species below)

other carcass or tissue waste
 (describe below)

other (describe below)

carcass – private cremation
 (enter species below)

CJHA use only

Clinic #: _____

Clinician: _____

Client name: _____

Necropsy first? Yes / No (circle one)
 (Yes = Necropsy Request Form Required)

Weight: _____ lbs

Comments: _____
 (Warnings about biohazards or other special conditions, species for cremations and disposals, "CHEMO" waste identification)

ATTACH HERE

- 4.3.7 Don a clean pair of gloves and transfer waste from your cart/container to the staged containers in the waste room.
- 4.3.8 Decontaminate any small spills (a few mls) or contaminated surfaces with a disinfectant.
- 4.3.9 Contact EH&S (5-8200) in case of large spills or release of contaminated materials.
- 4.3.10 EHS will pick up waste from room B97 twice per week, so it is not necessary to call EHS to schedule a pick up if waste is dropped off in this area.
- 4.3.11 If the waste containers in B97 are full or if there is any other problem noted with this area, report the issue to the Weill Hall Building Manager or Facility Directory immediately.

5.0 References:

5.1 Related Information:

- 5.1.1 Cornell Institutional Biosafety Committee website: <http://www.ibt.cornell.edu/>
- 5.1.2 Appendix A Biological Waste Disposal Guide

Appendix A

Biological Waste Disposal Guide

(For use in Departments NOT within the College of Veterinary Medicine)

Material	Contaminated with Biohazardous Materials ¹	Non-Biohazardous ²
Syringes (no needle at any time)	Sharps Disposal Container/ Regulated	Medical Waste (RMW)
Syringes with attached needles (hypodermic, HPLC, GC) Needles Razor blades Scalpels Blood vials	Sharps Disposal Container/ RMW	Sharps Disposal Container/ RMW
Pasteur or serological pipettes Micropipette tips Glass slides and cover slips Glass tubes and other glassware Broken plastic ware	Sharps Disposal Container/ RMW ³	Puncture Resistant Container/ Regular Trash
Plastic Petri dishes Plastic tubes, flasks, plates Gloves Bench paper and towels Disposable gowns	Red Biohazard Bag/ RMW	Regular Trash
Cell culture wastes Body fluids	Treat with Disinfectant or Autoclave/ Drain dispose (Sanitary Sewer only)	Treat with Disinfectant or Autoclave/ Drain dispose (Sanitary Sewer only)
Animal carcasses Tissues Bedding	Red Biohazard Bag/ Incineration ⁴	Black Bag/ Incineration ⁴
Ethidium bromide-contaminated lab waste Gels	Red Biohazard Bag or Sharps Disposal Container/ RMW ⁵	Per EH&S Guidelines ⁶
Mixed Wastes ⁷	Contact EH&S	Contact EH&S

Footnotes:

1. Infectious agents, biological toxins, human blood and body fluids, infected animals and contaminated bedding, all human and animal cell cultures. Segregate in double, red biohazard bags or plastic, sharps disposal containers, and handle as regulated medical waste (RMW). Attach a medical waste tracking tag to each bag or container, and contact EH&S (255-8200) for pickup. Do not dispose in regular trash.
2. Non-infectious human and animal agents, non-hazardous recombinant DNA organisms and products, plant and insect pathogens, and environmental organisms. Segregate in a transparent autoclave bag or a puncture resistant container such as a cardboard box. EH&S recommends that you treat this waste in an autoclave before disposal in the regular trash.
Recombinant DNA waste must be autoclaved prior to disposal in the regular trash.
3. In addition to a sharps disposal container, plastic pipettes and micropipette tips may be:
 - a. Placed in a puncture resistant container and then packaged in a red biohazard bag, or
 - b. Placed in a cardboard box that is labeled with the biohazard symbol and is lined with a red biohazard bag, or
 - c. Placed in double or triple red bags to minimize breakthrough.
4. Mixtures of animal carcasses or tissues with other items (e.g., plastic, paper) cannot be incinerated. Place this assorted waste in red biohazard bags and dispose as RMW.
5. Follow the guidance for other wastes in this table. Indicate "CHEMO" in the comment line of the medical waste tracking tag.
6. Dispose as per EH&S guidelines at http://www.ehs.cornell.edu/ehs_secured/epa/ethidium_bromide.cfm
7. Before creating any mixed waste, contact EH&S (255-8200) for guidance. This waste can include RMW or bio-based materials mixed with chemical hazardous and/or radioactive wastes. Contact EH&S to determine the appropriate treatment and disposal.